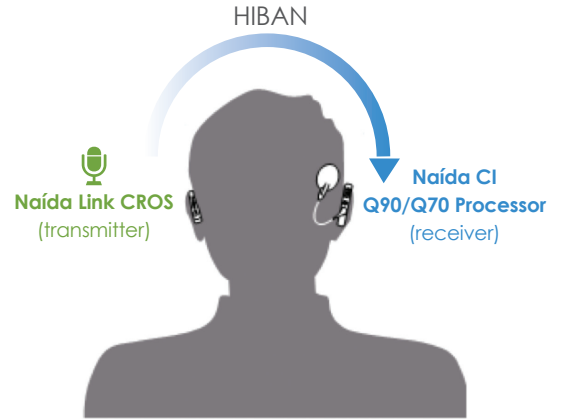




Phonak Naída™ Link CROS

The Naída Link CROS solution allows patients to hear their best in quiet and in noise by providing sound awareness and ease of listening from their non-implanted side. The CROS is designed for unilateral AB Naída CI recipients who have an unaidable hearing loss in the non-implanted ear. The Naída Link CROS is worn on the contralateral ear and transmits the microphone input signal wirelessly via HIBAN to the Naída CI processor.



Compatibility

Naída Link CROS is compatible with the Naída CI Q90 and Q70 sound processors.

Components of the Naída Link CROS

1. Phonak CROS Demo Hook (not for daily usage)
2. Microphone input with microphone protector
3. Push button for mute functionality
4. Battery compartment (functions as ON/OFF switch)
PowerOne size 13 batteries are required



Earpiece Options



CROS SlimTube

- Recommended for everyday use
- Available in left/right and different lengths (size 0, 1, 2, 3)
- Domes: small/medium/large

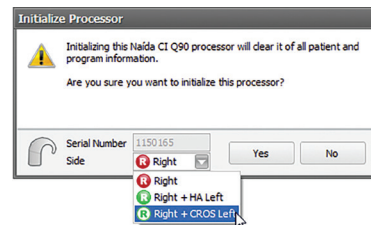


Customized CROS Tip

- Requires an earmold impression and is purchased from Phonak

Setting up the Naída Link CROS Solution

- No fitting required to Phonak Naída Link CROS device
- Initialise the Naída CI processor in SoundWave 3.1 or later for use with the CROS device



CROS Initialization

Select Right + CROS Left or Left + CROS Right



CROS icon defaults "ON" after CROS Initialization